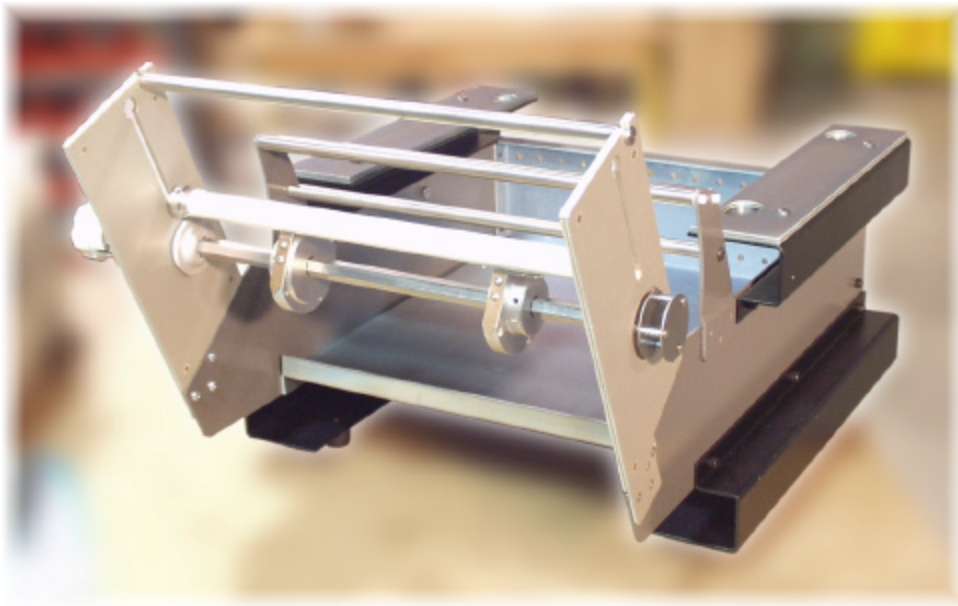


Double-Sided Lamination Adapter

Assembly Manual

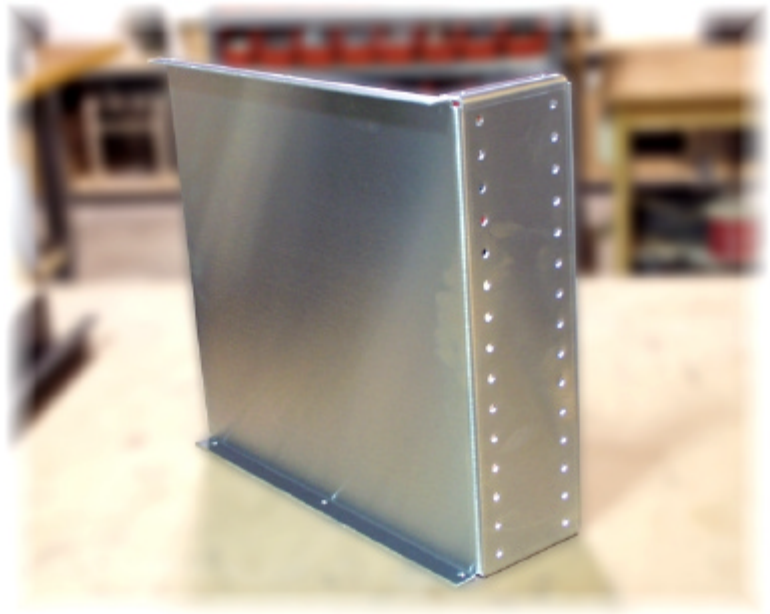


**Model 4050
5050
6050**

Think & Tinker, Ltd.
Palmer Lake, CO
80132

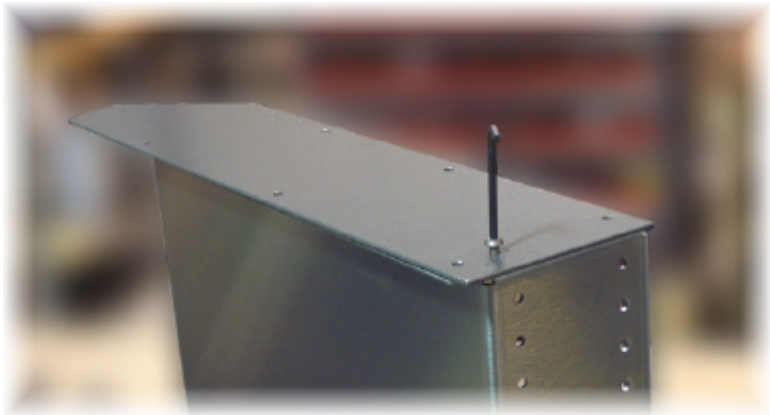
1

Set the plated spacer on it's side so that the flanges with the threaded (1/4-20) holes are accessible



2

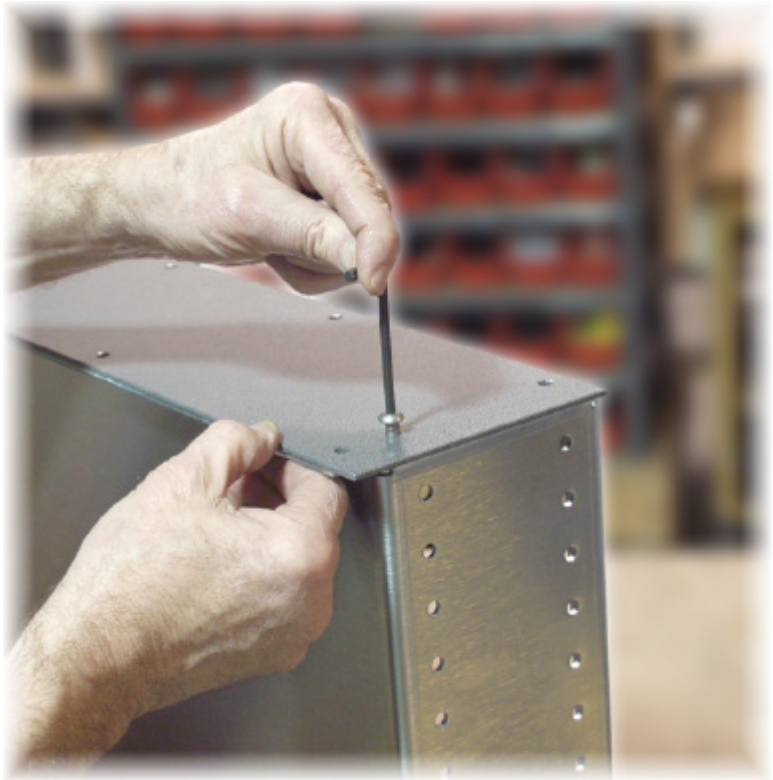
Select one of the side panels (granite gray with 7 holes around the periphery). Orient the plate so that the holes in the panel line up with the threaded holes in the flanges of the spacer.



3

Thread one of the 1/4-20 X 3/8" screws into the middle hole in the short side of panel. This is the only screw that is not used to secure the top or bottom rails.

Do not tighten the screw. You may have to move the side panel a bit to line up with the threaded holes later in the assembly.



4

Locate the bottom rail (the component with the rubber feet) and line up its 3 holes with the mating holes in the side panel.

Starting with the center hole, thread in the 1/4-20 X 3/8" screws. Snug up the screws but DO NOT TIGHTEN.



5

Locate one of the top rails and line up its 3 holes with the mating holes in the side cover.

Drop one of the 1/4-20 X 3/8" screws through the middle hole and thread on one of the 1/4-20 nuts. Snug but do not tighten.

Thread in the 2 remaining screws.

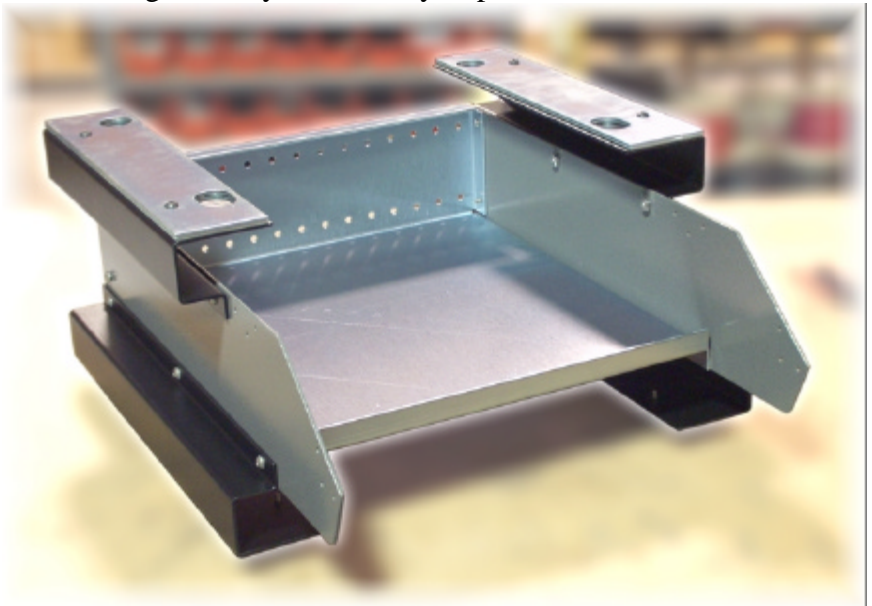
Tighten all of the screws on this side of the adapter.



6

Turn the adapter over (on to a soft piece of packaging to avoid scratching the paint) and repeat steps 2 thru 5. Once all of the screws are tightened, you are ready to proceed.

At this stage in the assembly, your efforts should have resulted in something that looks like this. If the assembled object looks more like a bicycle, you are assembling the wrong kit.



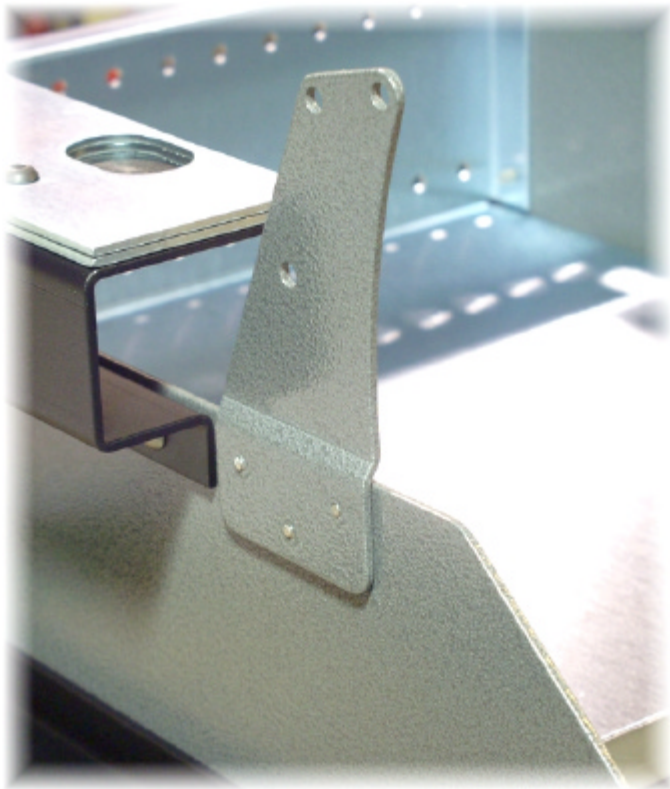
7

Locate the granite gray idler brackets. Mount the left bracket as shown using the 8-32 screws in the 3 holes just in front of the top rail.

Please note that the bracket is mounted to the OUTSIDE of the side panel with the screws thread from the INSIDE. The jog in the bracket will insure that the inside face of the bracket, lines up with the inside face of the side panel.

Leave the screws VERY loose.

Mount the right idler bracket to the other side panel.



8

Add the Delrin washers to the white pins sticking out of the idler rollers and insert the pins into the top two holes in the idler brackets.

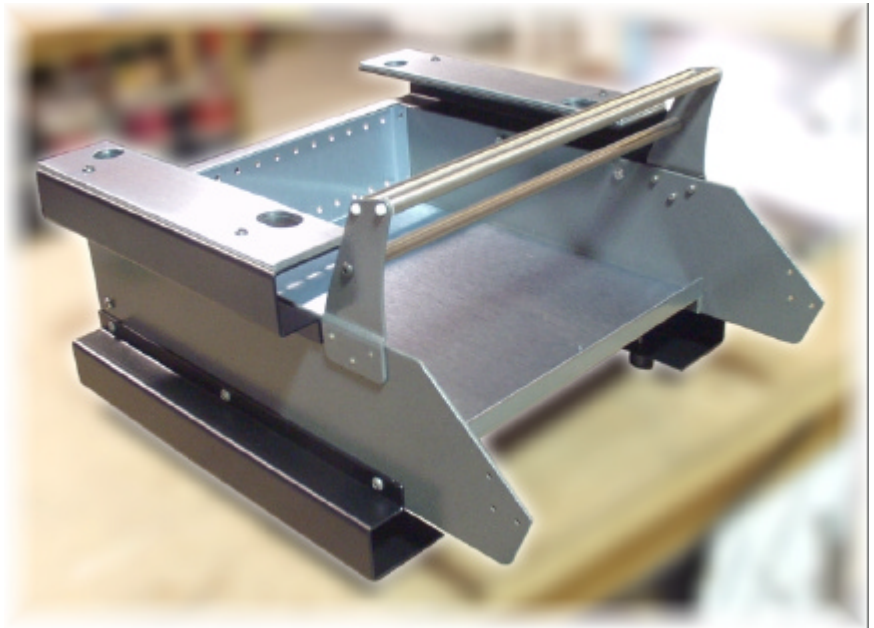
The reason for not tightening the screws in step 7 should not be apparent. The loose screws afford just enough slop to allow the pins to be inserted in the bracket holes without permanently deforming the brackets.

Locate the threaded spacer bar and mount it into the lower holes in the idler brackets.



Assuming that everything has gone well, your adapter should look like this.

The two idlers are clearly visible in the top positions of the idler bracket and spacer bar is seen below the idlers.



9

Locate the frame extender with the tensioning clutch.

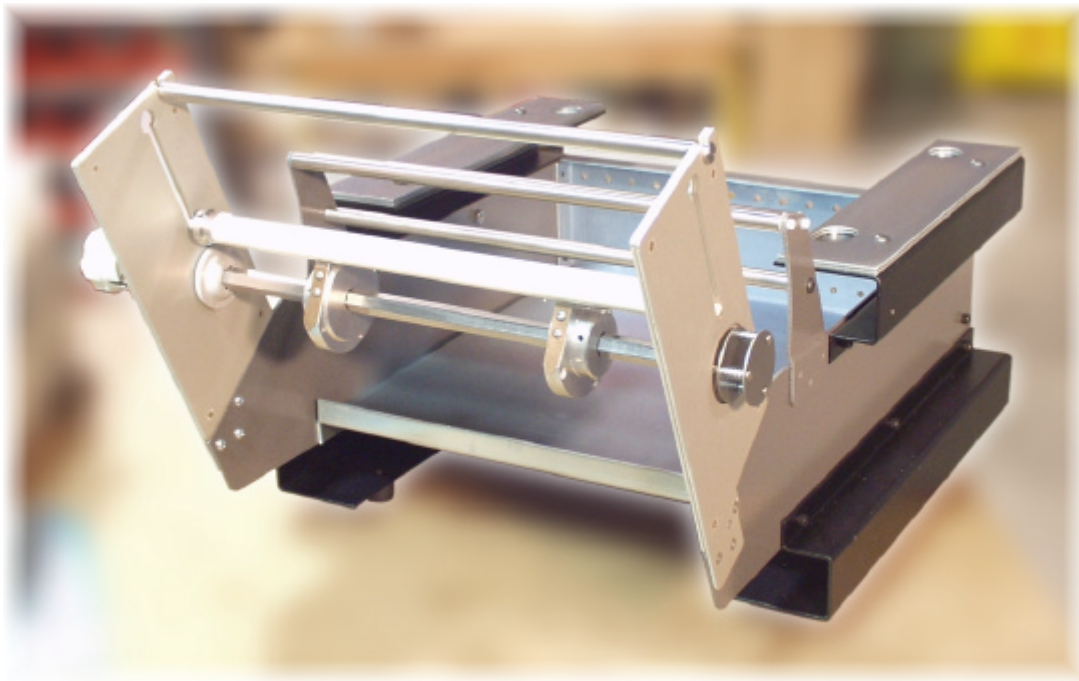
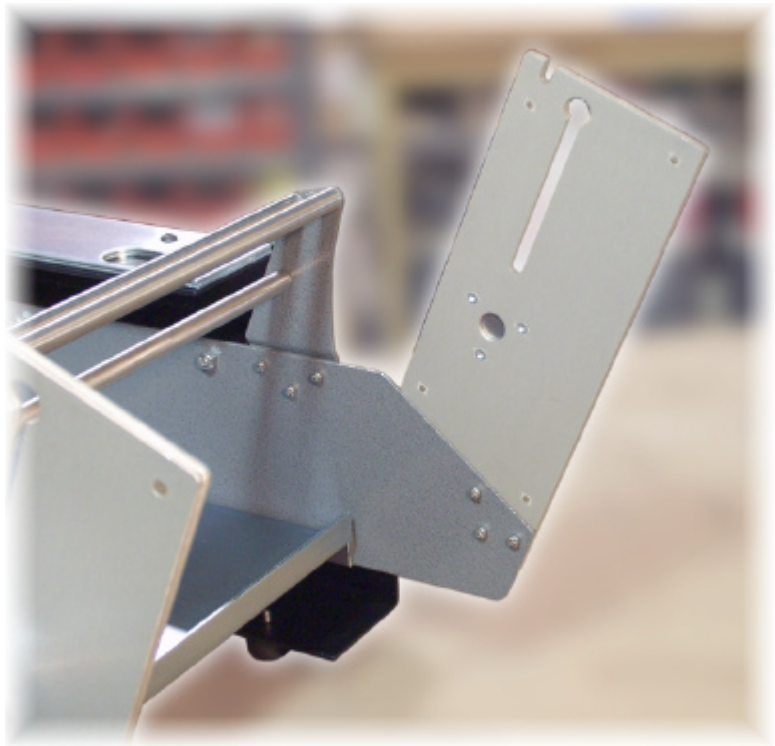
Line up the 3 mounting holes with the 3 lower holes in the LEFT side panel.

Insert the 3 8-32 screws and tighten.



10

Repeat with the RIGHT frame extender (with the shaft retainer spring).



With all of the hardware mounted, the adapter will look like this.

